

Passion leather

Passion is a soft pliable semi-aniline leather offering outstanding comfort and high durability.

Passion has a largely even surface structure with some visible insect bites and scars from healed wounds adding to the texture.

After aniline dyeing, a pigmentation coat is added to give color uniformity. A top coating is then applied giving the leather its protective layer. Elmosoft is produced using the most modern environmental sensitive processes.

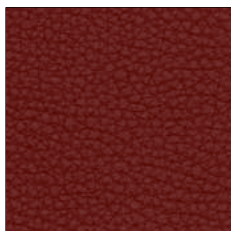
Passion has a soft natural touch with low breathability. The advantages of Passion are its low maintenance and high durability.

Passion is stain resistant and colour resilient in sunlight.

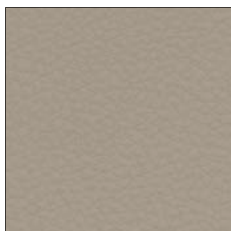
Passion is suitable for residential use where a balance between comfort and maintenance is required.

Passion is available in 5 colourways.

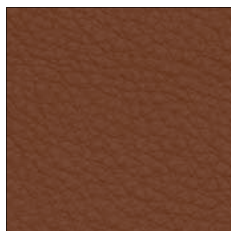
(Digital representation only)



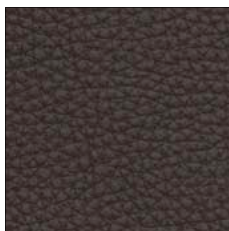
33532
Red



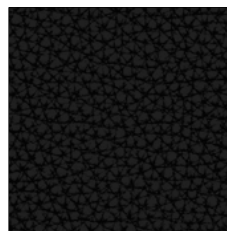
33535
Cream



33537
Cognac



33538
Brown



33539
Black