

Design : Nina Koppel

Composition : 90% new wool / 10% Helanca

Coulourways : 47 (Digital representation only)

Width: 130 cm

Weight : Approximately 635 g / Lin. m

Abrasion : 50,000 rubs Martindale Test

Pilling : Note 3. EN ISO 12945

Fire Certificates : BS EN 1021 1&2. BS 5852 crib 3

Light Fastness : 5-7 IOS 105-B02

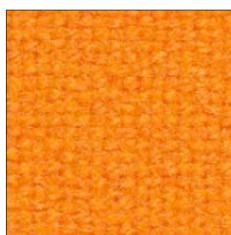
Yarn : Staple



100



118



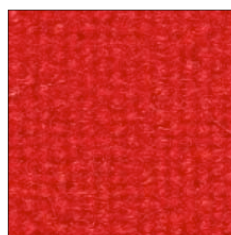
125



128



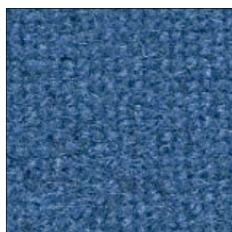
129



130



131



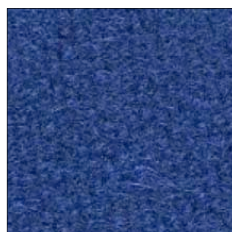
132



135



207



210



216



224



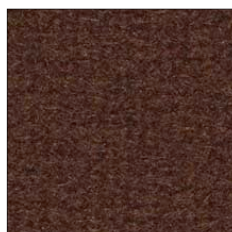
240



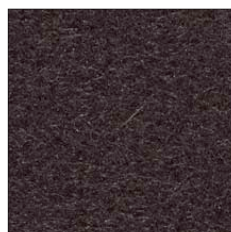
244



364



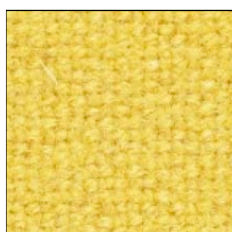
374



394



424



440



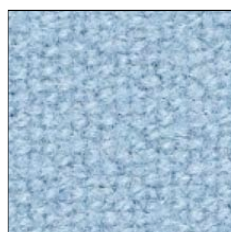
454



464



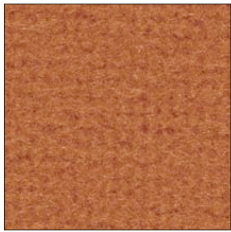
474



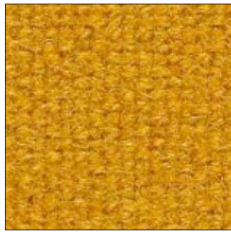
508

kvadrat

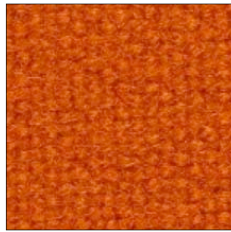
Tonus Fabric



554



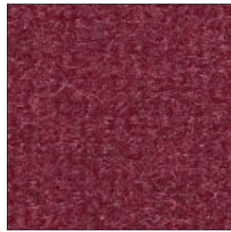
605



608



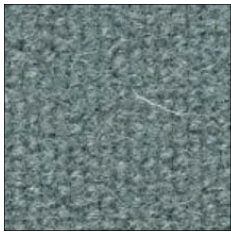
609



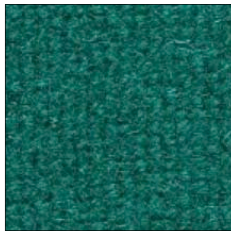
610



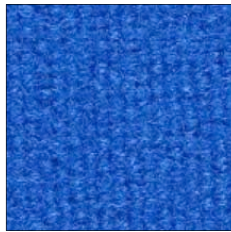
613



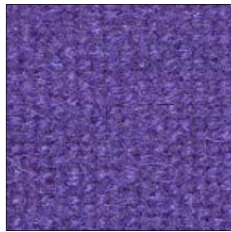
615



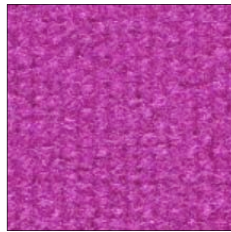
619



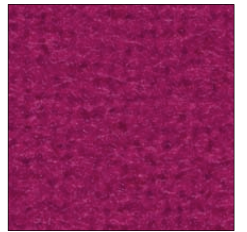
631



634



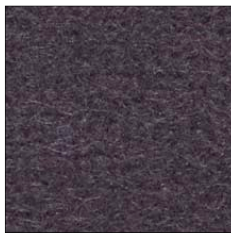
636



654



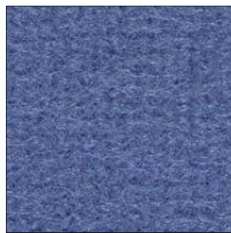
664



684



690



754



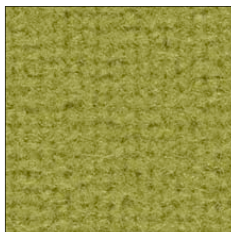
764



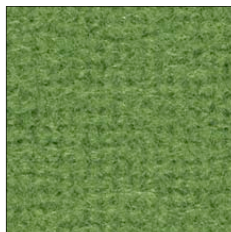
854



914



934



954



964



974

Schiang
The Old Dairy
Tewin Hill Farm
Hertfordshire
AL6 0LL
Tel: 01707 324995
info@schiang.com