

Design : Nanna Ditzel (1965)

Composition : 70% new wool / 30% Viscose

Coulourways : 58 (Digital representation only)

Width: 130 cm

Weight : Approximately 795 g / Lin. m

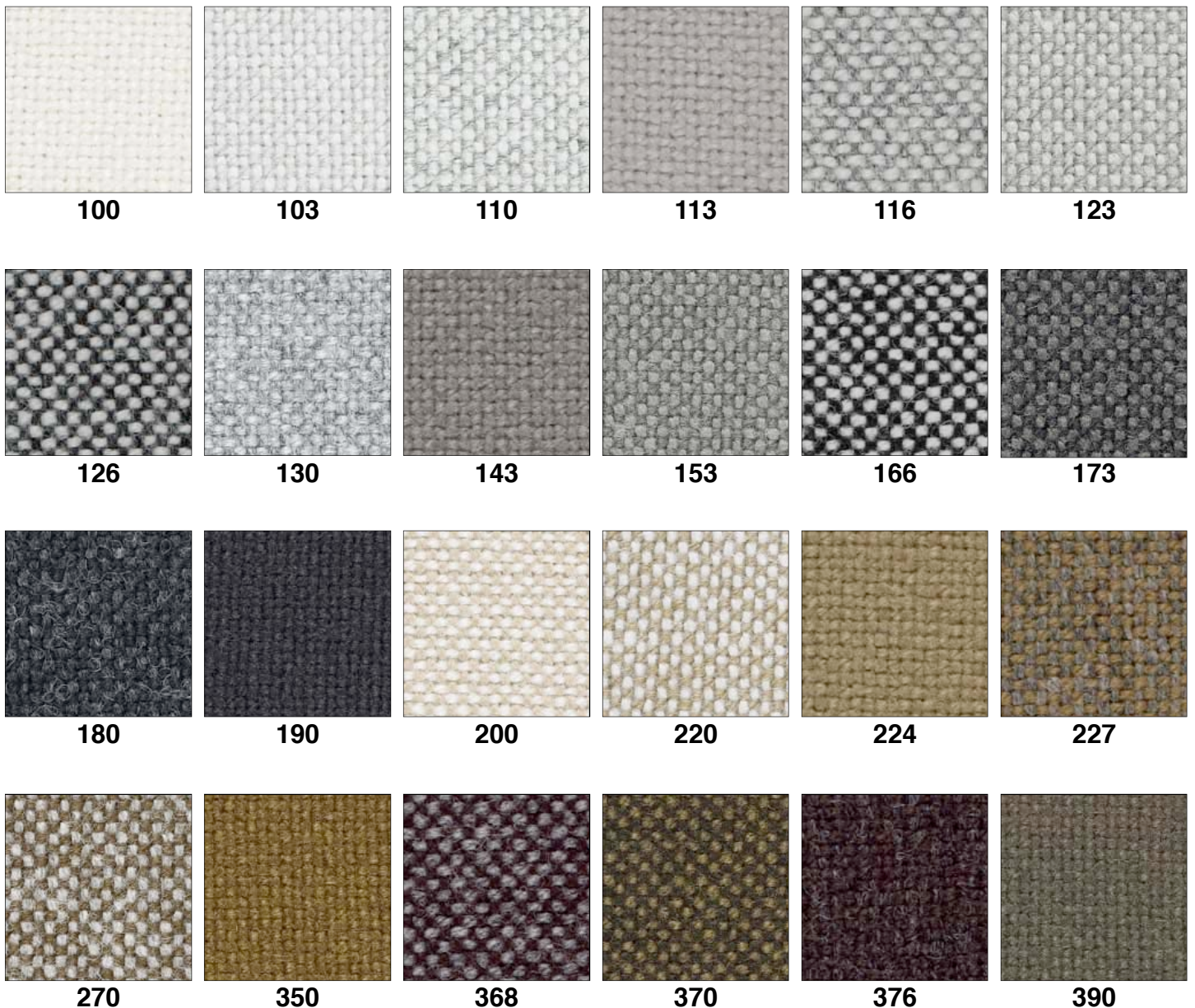
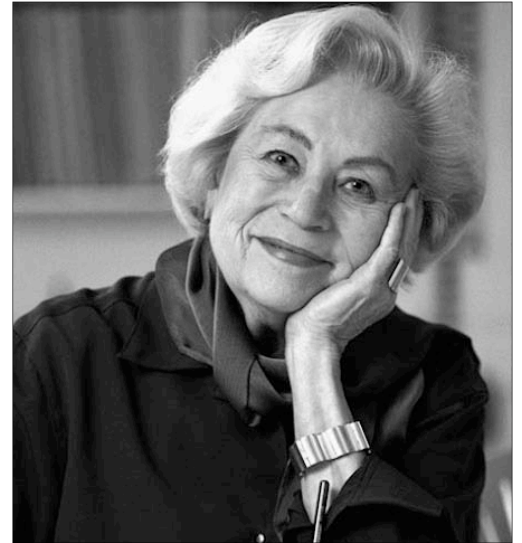
Abrasion : 100,000 rubs Martindale Test

Pilling : Note 3. EN ISO 12945

Fire Certificates : BS. 5852 parts 2-5

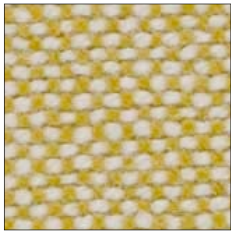
Light Fastness : 5-7 (IOS 1-8)

Yarn : Staple

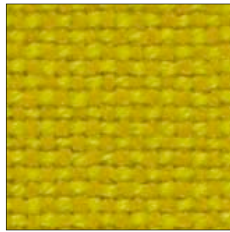


kvadrat

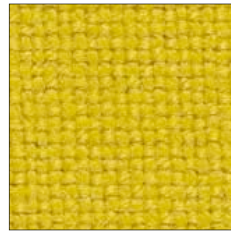
Halingdal Fabric



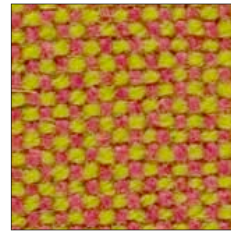
407



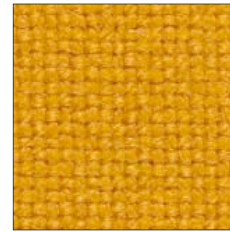
420



457



526



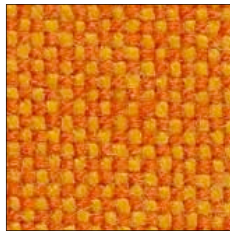
547



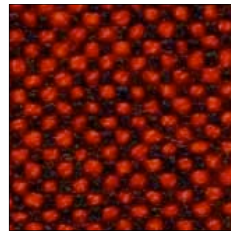
563



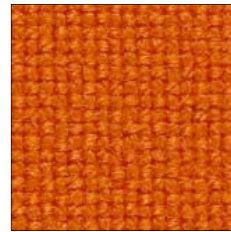
573



590



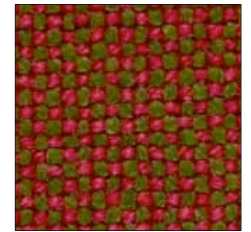
596



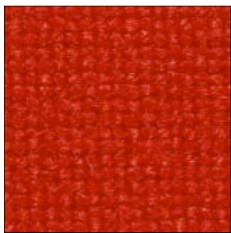
600



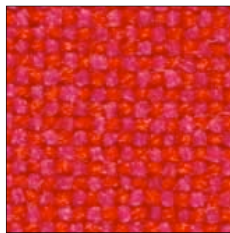
657



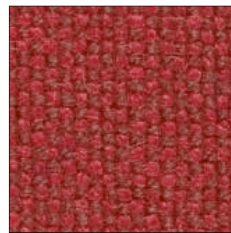
660



674



680



687



694



702



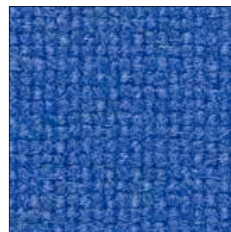
723



733



750



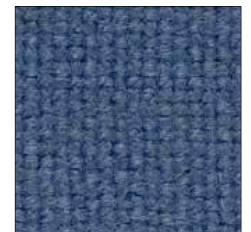
753



754



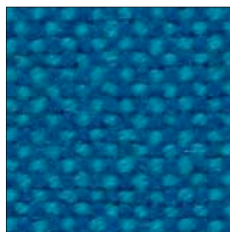
763



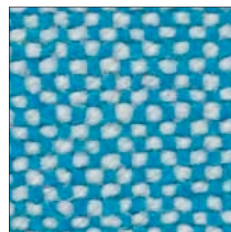
764



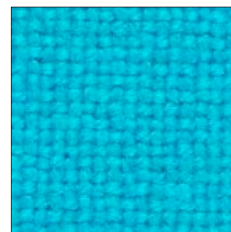
773



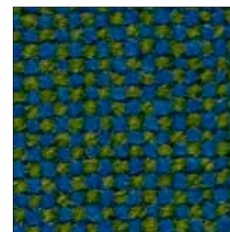
810



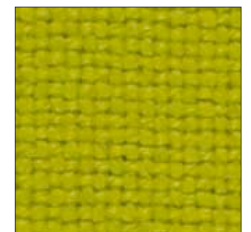
840



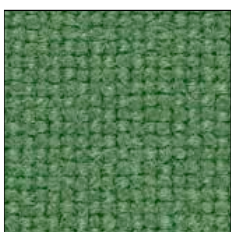
850



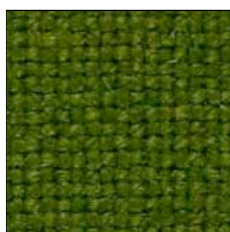
890



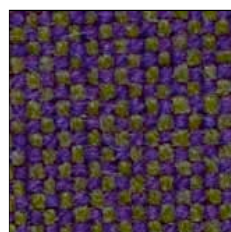
907



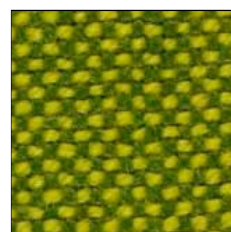
944



960



968



980

Schiang
The Old Dairy
Tewin Hill Farm
Hertfordshire
AL6 0LL
Tel: 01707 324995
info@schiang.com